

# Jina Huh-Yoo

## **Education**

**2011-2013 NLM Postdoctoral Fellow, University of Washington, Seattle**

NIH-NLM Postdoctoral Training Fellowship in Health Informatics  
Department of Biomedical Informatics and Medical Education,  
School of Medicine, University of Washington

Mentor: Wanda Pratt

**2004-2011 PhD, University of Michigan, Ann Arbor**

Doctor of Philosophy in Information, specializing in Human-Computer Interaction,  
School of Information

Thesis: Collaborative Help for Individualized Problems: Learning from the  
MythTV User Community and Diabetes Support Groups  
(Funded by NSF #0905460)

Advisor: Mark S. Ackerman

**2003-2004 Masters in HCI, Carnegie Mellon University**

Masters in Human-Computer Interaction  
Human-Computer Interaction Institute, School of Computer Science  
Graduation Project: In-car juke-box  
(in collaboration with a major US automobile company)

**1999-2003 BA, Korea National University of Arts, Seoul, Korea**

Bachelor of Arts in Multimedia Design, School of Film and Multimedia  
Graduation Project: "Three" 3D Graphic animation

Mentor: Yoonhee Chang, Hyung-soo Kim

**03/1998-07/1998 Ewha Woman's University, Seoul, Korea**

Entered the Design Department  
Attended one semester

## **Certificate**

- Completed the Coursera course: “Natural Language Processing” (2012) taught by Professors Dan Jurafsky and Christopher Manning, Stanford University

## **Awards**

- UCSD CTRI Research Development Award 2016
- Honorable Mention Poster Award, Quantified Self / Health Data Exploration Meeting, Robert Wood Johnson Foundation. Calit2. UC San Diego. May, 2016.
- NYU Langone Medical Center/Columbia University Summer Research Training Institute at the Center for Stroke Disparities Solutions (CSDS) Program 2015
- Selection of Best Paper in IMIA Yearbook 2014. Yearb Med Inform, 9, 197–198.
- Distinguished Paper Award, AMIA 2013, AMIA 2014
- Honorable Mention Award, ACM CHI 2013
- NIH mHealth Summer Institute Scholarship 2013. UCLA.
- Workshop of Interactive Systems in Healthcare (WISH) 2011 mentorship award
- Rackham Dissertation Fellowship (Winter 2011)  
Candidacy tuition, student and registration fees, and stipend (\$8,600)
- Grace Hopper Underwriters Scholarship (funded by Yahoo!)  
A scholarship to attend Grace Hopper Women in Computing Conference, Sept 28 ~ Oct 2, 2010. Atlanta, GA.
- Grace Hopper Underwriters Scholarship  
A scholarship to attend Grace Hopper Women in Computing Conference, Sept 30 ~ Oct 3, 2009. Tucson, AZ.
- Rackham Graduate Student Research Grant  
\$3,000 for research expenditures, Winter 2009
- ACM CHI '09 Doctoral Consortium
- Honorable Mention at the Workplay 2008 Competition, University of Michigan  
Group “The Hub” with Ben Congleton, Paul Hartzog, Jiang Yang, and Nicholas Senske. Designed a future awareness crowd information hub for the north campus.
- Graduate Fellow of the NSF Workshop on Values in Design  
August 8~16, 2008. Santa Clara University  
Directors: Geoffrey Bowker, Helen Nissenbaum
- Full Scholarship  
Korea National University of Arts (1999, 2000)

## **Grants Received**

NSF IIS Smart and Connected Health #1622626, #1622659

9/01/2016~8/31/2020

**Jina Huh-Yoo, MHCI, PhD**  
331 N. Pleasant Ave  
Ridgewood, NJ 07450  
T 734 645 3664  
[jinahuh@msu.edu](mailto:jinahuh@msu.edu)

“SCH: INT: Collaborative: Unobtrusive sensing and feedback for family wellness” (~\$1.8M)

Lead PI: Jina Huh-Yoo (UCSD site PI)

MSU site PI: Guoliang Xing; Co-PI: Wei Peng

NIH NLM Career Development Award in Biomedical Informatics (K01)

“InfoMediator: Weaving Clinical Expertise in Online Health Communities.” (~\$400K)

PI: Jina Huh-Yoo

*Mentors: Wanda Pratt, Barbara Given, Joyce Chai*

UC San Diego Health Sciences Academic Senate Grant Program (2017-2018)

“Assessing efficacy of passive and active forms of expressive art therapy in inpatient services” (\$10K)

PI: Jina Huh-Yoo

National Heart, Lung, and Blood Institute (NHLBI) R01 1R01HL136835-01A1 (2018-2022)

“Protecting Privacy and Facilitating Shared Access of Clinical and Genetic Data of Special Populations” (~\$1M) PI: Lucila Ohno-Machado

Role: Co-I, as HCI expert

NIH RFA-OD-15-002

“iCONCUR: Informed CONsent for Clinical data and biosample Use for Research” PI: multiple PI—Lucila Ohno-Machado (corresponding PI), Hyeoneui Kim, Xiaoqian Jiang

Role: Co-I

Center for Innovation and Research, Michigan State University—Sparrow Hospital. 7/2015~7/2016 (\$50K)

“Mobile Tool to Aid Health Behavior Choices”

PI: Jina Huh; Co-PIs: Pang-Ning Tan, Paul Entler, Barbara Given

Michigan State University Trifecta Pilot Grant Award

3/20/2015~3/20/2016

“Intervention with parents to increase physical activity and healthy eating among their adolescent children.” (\$10K)

PI: Lorraine Robbins

Role: Co-I

**Jina Huh-Yoo, MHCI, PhD**  
331 N. Pleasant Ave  
Ridgewood, NJ 07450  
T 734 645 3664  
[jinahuh@msu.edu](mailto:jinahuh@msu.edu)

Pilot Project 2.2 - Intelligent Search expansion and Visualization of Datasets  
(iSEE-DELVE) (\$70K) 5/1/2015-4/30/2016

Todd Johnson, Hyeoneui Kim, Jina Huh

This project is part of:

NIH 1U24AI117966-01 9/1/2014-08/31/2017

“BioCADDIE: Biomedical and Healthcare Data Discovery and Indexing Engine  
Center” (\$3M for 2014) PI: Lucila Ohno-Machado

Role: Pilot study investigator

### **Grants Submitted (As a PI)**

#### **Submitted but rejected:**

NIH R21 NINR

Submitted: June, 2017

“mHeart: Promoting healthy diet for cardiovascular disease prevention in Latino  
population”

PI: Jina Huh-Yoo

NIH R01 NLM Express Research Grants in Biomedical Informatics

Submitted: Feb, 2017

“InfoMediator: Improving Online Peer Patient Information Exchange Quality”  
(Requested: \$1,000,000)

PI: Jina Huh-Yoo

NIH R01 NIGMS

Submitted: Feb, 2017

“MOONRISE: MOdeling Online health commuNity Retention for Improved SElf-  
management”

(Requested: \$1,000,000)

PI: Jina Huh, Xiaoqian Jiang

NIH 1 R01 DK113216-01

“InfoMediator: Improving Online Peer Patient Information Exchange Quality”

PI: Jina Huh; Co-I: Chun-Nan Tsu, Robert El-Kareh, Jihoon Kim; Consultant/Key  
Personnel: Wanda Pratt, Ted Shortliffe

Robert Wood Johnson Foundation The Mood Challenge for ResearchKit

“The MoodChild: Predicting child mood for improving family dynamic”

PI: Jina Huh, Co-I: Tammy Toscos, Kay Rhee, Hyeoneui Kim

NIH R21/R33 2/2016

“FamiLIA: Sensor and feedback for family physical activity”

PI: Jina Huh, Co-I: Jihoon Kim, Robert El-Kareh, Kyung Rhee, Susan Onegawa, Guoliang Xing, Wei Peng, Barbara Smith

NIH R21 2/2016

“Modeling patient participation in multi-modal internet-based research”

PI: Jina Huh, Xiaoqian Jiang; Co-I: Jihoon Kim, Siddharth Singh

PCORI 11/2015

“Mining Full-text Publications for Efficient Patient Decision Support: A Novel Natural Language Processing Approach Evaluated on Diabetes Type 2 Patients”

PI: Siddhartha Jonnalagada Co-PI: Jina Huh

PCORI 3/2016 LOI

“Strengthening and sustaining patient engagement in Patient Powered Research Networks”

PI: Jina Huh, Co-PI: Xiaoqian Jiang

NIH 06/2015: 4/1/2016-3/31/2021

“Guys/Girls Opt for Activities for Life (GOAL) Trial”

PI: Lorraine Robbins, Co-Is: Jiying Ling, Mildred Horodyski, Jina Huh

Consultant: Dhruv Sharma

*(requested: \$3,810,118.00 total direct and indirect costs)*

NSF 12/2014: Smart and Connected Health 7/1/2015-6/30/2019

“SCH: INT: FrutiPet: Unobtrusive sensing and motivational feedback for family wellness”

PI: Jina Huh; Co-PIs: Olga Napolova, Wei Peng, Barbara Smith, Guoliang Xing

*(requested: \$2,024,802 total direct and indirect costs)*

NSF 12/2013: Smart and Connected Health

“SCH: INT: FrutiPet: Unobtrusive sensing and feedback for family wellness”

PI: Jina Huh; Co-PIs: Olga Napolova, Wei Peng, Barbara Smith, Guoliang Xing

*(requested: \$1,549,506 total direct and indirect costs)*

NSF 12/2013: Smart and Connected Health

“SCH: INT: Collaborative Research: FutureMe: Aiding health choices”

PI: Jina Huh; Co-PIs: Sarah L Hession (MSU), Amber Vermeesch (MSU), John

Gennari (UWashington), Dan Cook (UWashington), Wanda Pratt (UWashington)

*(requested: \$1,234,464 total direct and indirect costs on the MSU part only)*

NIH 11/2013: NINR R21

“¡Vamos! Facebook, Social Support and Metabolic Risk in Postmenopausal Latinas” PI: Amber Vermeesch, Amanda Holmstrom Co-I: Jina Huh

(requested: \$422,125 total direct and indirect costs)

NIH 6/13/2012: NIH Pathway to Independence Award (K99/R00)

“InfoMediator: Weaving Clinical Expertise in Online Patient Communities.”

PI: Jina Huh

Mentors: Wanda Pratt, David W. McDonald (requested: \$919,718.00)

## **Publications**

\* indicates research advisee

Please note that ACM conferences on Human Factors in Computing Systems (CHI), Computer Supported Cooperative Work (CSCW), GROUP, and Designing Interactive Systems (DIS) are considered as premier publication venues for the field of information and computer science, often considered as more prestigious than most journals. These conferences go through a rigorous review process, involving minimum of four reviewers per submission and multiple revision cycle through the rebuttal process.

### **Full Publications**

#### **2018**

1. **Huh J**, Koola J, Contreras A, Castillo AK, Ruiz M, Tedone KG, Yakuta M, Schiaffino MK. Consumer Health Informatics Adoption among Underserved Populations: Thinking beyond the Digital Divide. Yearbook of medical informatics. 2018 Aug;27(01):146-55.

#### **2017**

2. Courtland VanDam, Shaheen Kanthawala, Wanda Pratt, Joyce Chai, **Jina Huh**, Detecting clinically related content in online patient posts, In Journal of Biomedical Informatics, Volume 75, 2017, Pages 96-106, ISSN 1532-0464
3. Rebecca A. Marmor, Wenrui Dai, Xiaoqian Jiang, Shuang Wang, Sarah L Blair, **Jina Huh**. Increase in Contralateral Prophylactic Mastectomy Conversation Online Unrelated to Decision-Making. Journal of Surgical Research (impact factor: 2.198) 2017. Volume 218, 253 - 260.
4. Choi MJ, Kim SH, Lee S, Kwon BC, Yi JS, Choo J, **Huh J**. Toward Predicting Social Support Needs in Online Health Social Networks. J Med Internet Res 2017;19(8):e272 DOI: 10.2196/jmir.7660
5. Jing Zhang, Rebecca Marmor, **Jina Huh**. 2017. Towards supporting patient decision-making in online diabetes communities. AMIA Annual Symposium Proceedings. 2017. 1893–1902.

6. Chongguang Bi, Guoliang Xing, Tian Hao, **Jina Huh**, Wei Peng, and Mengyan Ma. 2017. FamilyLog: A mobile system for monitoring family mealtime activities. 2017 IEEE International Conference on Pervasive Computing and Communications (PerCom), IEEE, 21–30. <http://doi.org/10.1109/PERCOM.2017.7917847>

## 2016

7. **Jina Huh**, Bum Chul Kwon, Sung-Hee Kim, Sukwon Lee, Jaegul Choo, Jihoon Kim, Min-Je Choi, Ji Soo Yi. 2016. Personas in online health communities. *Journal of Biomedical Informatics* 63: 212–225. <http://doi.org/10.1016/j.jbi.2016.08.019>
8. **Jina Huh**, Rebecca Marmor, and Xiaoqian Jiang. 2016. Lessons Learned for Online Health Community Moderator Roles: A Mixed-Methods Study of Moderators Resigning From WebMD Communities. *Journal of medical Internet research* 18, 9: e247. <http://doi.org/10.2196/jmir.6331>
9. Albert Park, Andrea L Hartzler, **Jina Huh**, Gary Hsieh, David W McDonald, and Wanda Pratt. 2016. “How Did We Get Here?”: Topic Drift in Online Health Discussions. *Journal of Medical Internet Research* 18, 11: e284. <http://doi.org/10.2196/jmir.6297>
10. Shaheen Kanthawala, Amber Vermeesch, Barbara Given, and **Jina Huh**. 2016. Answers to Health Questions: Internet Search Results Versus Online Health Community Responses. *Journal of medical Internet research* 18, 4: e95.
11. Nath, C\*, **Huh, J.**, Kalyan, A., Jonnalagadda, S. Analysis of Website Sharing in Online Health Communities. *J Med Internet Res* (2016). doi:10.2196/jmir.5237 <http://dx.doi.org/10.2196/jmir.5237>
12. Kwon BC, Kim S-H, Lee S, Choo J, **Huh J.**, Yi JS. VisOHC: Designing Visual Analytics for Online Health Communities. *IEEE Trans Vis Comput Graph*. 2016;22(1):71-80. doi:10.1109/TVCG.2015.2467555.
13. Taiwoo Park, Tianyu Hu, and Jina Huh. 2016. Plant-based Games for Anxiety Reduction. In *Proceedings of the 2016 Annual Symposium on Computer-Human Interaction in Play (CHI PLAY '16)*. ACM, New York, NY, USA, 199-204. DOI: <https://doi.org/10.1145/2967934.2968094>
14. Jaemyung Shin, Bumsoo Kang, Taiwoo Park, **Jina Huh**, Jinhan Kim, and Junehwa Song. 2016. BeUpright: Posture Correction Using Relational Norm Intervention. *Proceedings of the 2016 CHI Conference on Human Factors in Computing Systems - CHI '16*, ACM Press, 6040-6052.

## 2015

15. Park A\*, Hartzler AL, **Huh J**, McDonald DW, Pratt W. Automatically Detecting Failures in Natural Language Processing Tools for Online Community Text. *J Med Internet Res* 2015;17(8):e212
16. **Huh, J.** Role of Online Health Communities on Clinical Questions Learned from “See your doctor” Threads. *ACM CSCW 2015*. In Proceedings of the 18th ACM Conference on Computer Supported Cooperative Work & Social Computing (CSCW '15). ACM, New York, NY, USA, 1488-1499.
17. Lisa M. Kopf\*, Simone Graetzer, and **Jina Huh**. 2015. Videos influence behavior change measures for voice and speech in individuals with Parkinson's disease. In Proceedings of the conference on Wireless Health (WH '15). ACM, New York, NY, USA, , Article 18 , 7 pages. DOI=<http://dx.doi.org/10.1145/2811780.2811932>
18. Park, A\*., Hartzler, A., **Huh, J.**, McDonald, D.W., Pratt, W. (2015). Homophily of Vocabulary Usage: Beneficial Effects of Vocabulary Similarity in Online Health Communities Participation. In American Medical Informatics Association. 1024-1033.

## 2014

19. **Huh, J.**, Liu, L. S., Neogi, T., Inkpen, K., & Pratt, W. (2014). Health Vlogs as Social Support for Chronic Illness Management. *ACM Transactions on Computer-Human Interaction*, 21(4), 1–31. doi:10.1145/2630067
20. **Huh, J.**, Pratt, W. Weaving Clinical Expertise in Online Health Communities. *ACM SIGCHI Conference on Human Factors in Computing Systems*. 2014. 1355-1364.

## 2013

21. **Huh, J.**, Yetisgen-Yildiz, M. & Pratt, W. Text classification for assisting moderators in online health communities. *J. Biomed. Inform.* 46, 998–1005 (2013).
22. **Huh, J.**, Le, T., Reeder, B., Thompson, H. J. & Demiris, G. Perspectives on wellness self-monitoring tools for older adults. *Int. J. Med. Inform.* 82, 1092–103 (2013).
23. Hartzler, A. L., McDonald, D. W., Park, A., **Huh, J.**, Weaver, C., & Pratt, W. (2014). Evaluating health interest profiles extracted from patient-generated data. In American Medical Informatics Association. 626–635. Distinguished Paper Award (Top 5 papers).
24. **Huh, J.**, McDonald, D., Hartzler, A., Pratt, W. Patient Moderator Interaction in Online Health Communities. In Proceedings of American Medical Informatics Association. 627-636. 2013. Distinguished Paper Award (Top 5 papers)



25. Liu, L. S., **Huh, J.**, Neogi, T., Inkpen, K., & Pratt, W. (2013). Health vlogger-viewer interaction in chronic illness management. In *Proceedings of the SIGCHI Conference on Human Factors in Computing Systems - CHI '13* (pp. 49–58). New York, New York, USA: ACM Press. Honorable Mention Award (Top 5%).

## **2012**

26. **Huh, J.**, Patel, R., Pratt, W. Tackling Dilemmas in Supporting 'The Whole Person' in Online Patient Communities. In Proceedings of the ACM 2012 annual conference on Human factors in computing systems (CHI '12). ACM, New York, NY, USA, 923-926.
27. **Huh, J.** and Ackerman, M. S. 2012. Collaborative help in chronic disease management: supporting individualized problems. In Proceedings of the ACM 2012 conference on Computer Supported Cooperative Work (CSCW '12). ACM, New York, NY, USA, 853-862.

## **2011 and before**

28. **Huh, J.**, Newman, M. W., and Ackerman, M. S. 2011. Supporting collaborative help for individualized use. In Proceedings of the 2011 annual conference on Human factors in computing systems (CHI '11). ACM, New York, NY, USA, 3141-3150.
29. **Huh, J.**, Ackerman, M. S., Newman, M. W., and Buyuktur, A. G. 2010. Progressive scenarios: a rapid method for understanding user interpretations of technology. In Proceedings of the 16th ACM international conference on Supporting group work (GROUP '10). ACM, New York, NY, USA, 31-34.
30. **Huh, J.**, Pollack, M., Katebi, H., Sakallah, K., and Kirsch, N. 2010. Incorporating user control in automated interactive scheduling systems. In Proceedings of the 8th ACM Conference on Designing interactive Systems (Aarhus, Denmark, August 16 - 20, 2010). DIS '10. ACM, New York, NY, 306-309.
31. **Huh, J.**, Nam, K., and Sharma, N. 2010. Finding the lost treasure: understanding reuse of used computing devices. In Proceedings of the 28th international Conference on Human Factors in Computing Systems (Atlanta, Georgia, USA, April 10 - 15, 2010). CHI '10. ACM, New York, NY, 1875-1878.
32. **Huh, Jina**, and Mark Ackerman. "Obsolescence: Uncovering Values in Technology Use." *M/C Journal* 12.3 (Jul. 2009). 19 Aug. 2009 <http://journal.media-culture.org.au/index.php/mcjournal/article/view/157>
33. Mirel, B. Maher, M. **Huh, J.** 2005. *User Needs in e-Government: Conducting Policy Analysis with Models-on-the-Web*. Proceedings of the HCI'05 Conference on People and Computers XIX 2005 p.131-148

### **Peer-reviewed Conference Extended Abstracts**

1. Marmor, R.\* , Schoenbrunner, A., Blair, S., **Huh, J.** (2016) Making Sure it Doesn't Come Back: Reasons for Choosing Contralateral Prophylactic Mastectomy in an Online Health Community. Scientific Forum Program
2. Rebecca A. Marmor\*, Erin P. Ward, Elizabeth Epstein, Meera Reghunathan, Anna Schoenbrunner, Jonathan T. Unkart, Sarah L. Blair and **Jina Huh**. First posts: A content analysis of an online breast cancer community user's initial postings. San Antonio Breast Cancer Symposium 2016. San Antonio, TX. Accepted for poster presentation.
3. Rebecca A. Marmor\*, Travis J. Wilder and **Jina Huh** (2016). Shared Happiness is Doubled: Time-Dependent Analysis of Sentiment on an Online Forum. National Library of Medicine Informatics Training Conference. Columbus, OH. (oral presentation). American College of Surgeons 2016 Clinical Congress. October 16-20, 2016. Washington DC.
4. Kanthawala, S.\* , VanDam, C., Given, B., Chai, J., Vermeesch, A., Huebner, M., Crowley, J., **Huh, J.** (2015) Question Types in Online Health Communities. In American Medical Informatics Association Extended Abstracts.
5. Yuan, S.\* , & **Huh, J.** (2014). Social Support Exchanges Among Online Health Community Members. In American Medical Informatics Association Extended Abstracts.
6. **Huh, J.**, Yetisgen-Yildiz, M., Hartzler, A., McDonald, D., Park, A., Pratt, W. Toward Automatic Weaving of Medical Advice with Patient Experiences Using Text Classification. AMIA 2012 Extended Abstracts.
7. Park A.\* , Hartzler A, **Huh J**, McDonald D, Pratt W. Extracting Everyday Health Interests from Online Communities. In AMIA 2012 Extended Abstracts.
8. Hartzler A, McDonald D, Park A., **Huh J**. Pratt W. Mentor matching in peer health communities. In AMIA 2012 Extended Abstracts.
9. **Huh, J.** and Ackerman, M. S. 2010. Exploring social dimensions of personal information management with adults with AD/HD. In Proceedings of the 28th of the international Conference Extended Abstracts on Human Factors in Computing Systems (Atlanta, Georgia, USA, April 10 - 15, 2010). CHI EA '10. ACM, New York, NY, 3715-3720.
10. **Huh, J.** and Ackerman, M. S. 2009. Designing for all users: including the odd users. In Proceedings of the 27th international Conference Extended

Abstracts on Human Factors in Computing Systems (Boston, MA, USA, April 04 - 09, 2009). CHI '09. ACM, New York, NY, 2449-2458.

11. **Huh, J.**, Ackerman, M. S., and Douglas, R. 2007. The use of aesthetics in HCI systems. In CHI '07 Extended Abstracts on Human Factors in Computing Systems (San Jose, CA, USA, April 28 - May 03, 2007). CHI '07. ACM, New York, NY, 2441-2446.
12. **Huh, J.**, Jones, L. Erickson, T. Kellogg, W. Bellamy, R. Thomas, J. 2007. BlogCentral: the role of internal blogs at work. In CHI '07 extended abstracts on Human factors in computing systems (CHI EA '07). ACM, New York, NY, USA, 2447-2452.

### **Refereed Conference Panels, SIGs, and Workshop Organizing**

1. Jing Zhang, Gabriela Marcu, Julie A. Kientz, Laura R. Pina, Siddhant Ambulkar, Lena Mamykina, and **Jina Huh**. 2017. Bridging Communities for Better HIT: Streaming Conversations from WISH on Challenges, Strategies, and Opportunities. In Proceedings of the 2017 CHI Conference Extended Abstracts on Human Factors in Computing Systems (CHI EA '17). ACM, New York, NY, USA, 1346-1349. DOI: <https://doi.org/10.1145/3027063.3049281>
2. **Huh, J.**, Hartzler, A., Munson, S., Anderson, N., Edwards, K., Gore, J. L., McDonald, D., O'Leary, J., Parker, A., Streat, D., Yetisgen-Yildiz, M., Ackerman, M. S., and Pratt, W. 2012. Brainstorming design for health: helping patients utilize patient-generated information on the web. In Proceedings of the ACM 2012 conference on Computer Supported Cooperative Work Companion (CSCW '12). ACM, New York, NY, USA, 11-12.
3. **Huh, J.**, Nathan, L. P., Silberman, S., Blevis, E., Tomlinson, B., Sengers, P., and Busse, D. 2010. Examining appropriation, re-use, and maintenance for sustainability. In Proceedings of the 28th of the international Conference Extended Abstracts on Human Factors in Computing Systems (Atlanta, Georgia, USA, April 10 - 15, 2010). CHI EA '10. ACM, New York, NY, 4457-4460.
4. Treem J., Ellison N., **Huh J.**, Rader E.. 2010. Social Media and the Communication of Knowledge in the Workplace: Will Information Technology Change How Organizations Manage and Apply Knowledge? A panel at NCA 96th Annual Convention. (San Francisco, CA, Nov 14-17. 2010)
5. **Huh, J.**, Ackerman, M. Erickson, T. Harrison, S. Sengers, P. 2007. Special-Interest-Group: Beyond usability: Taking social, situational, cultural, and other contextual factors into account. In CHI '07 Extended Abstracts on Human Factors in Computing Systems (San Jose, California, April 28 - May 3).

### **Doctoral Consortium (including mentee's)**

1. Jing Zhang. 2017. Supporting Information Needs of Transitional Phases in Diabetes Management Through Online Health Communities. 2017 European Computer Supported Cooperative Work. In press.

2. Jing Zhang. 2017. Supporting Information Needs of Transitional Phases in Diabetes Management Through Online Health Communities. In Companion of the 2017 ACM Conference on Computer Supported Cooperative Work and Social Computing (CSCW '17 Companion). ACM, New York, NY, USA, 107-111. DOI: <https://doi.org/10.1145/3022198.3024942>
3. **Huh, J.** 2009. Doctoral Consortium: Users' Ongoing Work on Managing Computational Artifacts. In CHI '09 Extended Abstracts on Human Factors in Computing Systems (Boston, Massachusetts, April 4 – 9)

### **Refereed Workshop Papers and conference**

1. Kopf, L.M.\*, Graetzer, S., Shrivastav, R., Liu, X., & **Huh, J.** (November 2015). Using videos to promote awareness and behavior change for voice in Parkinson's disease. Poster presentation at the American Speech-Language-Hearing Association, Denver, CO.
2. Kopf, L.\*, **Huh, J.**, Shrivastav, R. Vocal Health Discussion in Online Forums. The Voice Foundation's 43rd Annual Symposium: Care of the Professional Voice. 2014.
3. **Huh J.** InfoMediator: Weaving Clinical Expertise in Online Health Communities. Workshop in Interactive Systems in Healthcare '13 poster.
4. **Huh J.**, McDonald D, Hartzler A, Park A, Pratt W. The Doctor is in the House: Examining Health Professionals' Roles in Online Patient Communities. WISH '12 poster.
5. Park A\*, Hartzler A, **Huh J.**, McDonald D, Pratt W. Automatic Profiling of Users' Health Interests from Online Communities. WISH '12 poster.
6. Dong, T., **Huh, J.**, Newman, M.W., Ackerman, M.S. Supporting Re-Use in DIY Software Projects: A Gray-Box Approach. ACM CSCW Workshop position paper. 2011.
7. **Huh, J.** and Ackerman, M. S. Using Collective Intelligence to Support Diabetes Patients. ACM Group Workshop on Clorg. 2010.
8. **Huh, J.** and Ackerman, M. S. 2009. Challenges in Sustainability: Understanding Users' Appropriation and Maintenance Work of Computational Artifacts. A workshop position paper at ACM CHI 2009
9. **Huh, J.** and Ackerman, M. 2006. The Knowledge in Design Research for "Exploring Design" Workshop position paper. ACM DIS 2006. <http://design.schweitzerhome.net/>

### **Book Chapters**

1. Andrea Hartzler and **Jina Huh.** Chapter X. Patient Power on the Web: The Multifaceted Role of Personal Health Wisdom. Eds. Thomas Wetter. In Consumer Health Informatics. Springer. 2015.

**Invited Talks and Panels, not including conferences**

1. "Closing the methodological loop in biomedical informatics research" Special seminar talk. Harvard Medical School Division of Preventive Medicine. March 20, 2017.
2. "Unobtrusive sensing and feedback for family wellness" NSF Smart and Connected Health PI meeting. Boston, MA. March 21-22, 2017
3. "Social Media for Biomedical Informatics Research" UC San Diego Health Sciences International. University of California San Diego. October 6, 2016
4. "Social Media for Biomedical Informatics Research" MED 264: Principles of Biomedical Informatics. University of California San Diego. September 27, 2016
5. "Closing the methodological loop in biomedical informatics research" Surgery Chair's Research Fellow Conference, September 12, 2016. ECOB, UC San Diego.
6. "Visual Media for Patient-Centered Systems" Biomedical Informatics, UC San Diego. October 30, 2015
7. "Closing the Loop in HCI and Biomedical Informatics Research" The Design Lab. University of California San Diego. October 21, 2015.
8. "Social Media for Biomedical Informatics Research" MED 264: Principles of Biomedical Informatics. University of California San Diego. October 15, 2015
9. "Health Vlogs as Social Support for Chronic Illness Management" Yonsei University, School of Communication. Seoul, Korea. April 21, 2015.
10. "Weaving Clinical Expertise in Online Health Communities" Michigan State University College of Nursing. East Lansing, MI. March 20, 2015.
11. "Using peer patient network to support everyday health management" University of California—San Diego Division of Biomedical Informatics. San Diego, CA. March 13, 2015.
12. "Information extraction to support online peer patient network" Michigan State University. Natural Language Processing course guest lecture. March 4, 2015.
13. "InfoMediator: Weaving Clinical Expertise in Online Health Communities" Seoul National University (SNU), Biomedical Knowledge Engineering Laboratory. Seoul, South Korea. December 17, 2014.
14. "InfoMediator: Weaving Clinical Expertise in Online Health Communities" Korea Advanced Institute of Science and Technology (KAIST), Daejeon, South Korea. December 15, 2014.

15. Doctoral consortium panelist for HCI Korea. Seoul, South Korea. December 12, 2014.
16. "Dissecting a Design Problem Through Social, Technical, and Medical Lenses" ADV/JRN/MI 900 course lecture. Michigan State University. College of Communication Arts and Sciences. East Lansing, MI. October, 2014
17. "Weaving Clinical Expertise into Online Health Communities" Trifecta Faculty-Student meeting. Michigan State University College of Communication Arts and Sciences. Trifecta. September, 2014
18. "Clinical Expertise in Everyday Illness Management" University of Waterloo, Ontario, Canada. May 2, 2014.
19. "Social Media for Individuals with Chronic Illness" Trifecta course. Michigan State University College of Engineering. Feb, 27. 2014.
20. "Social Media for Individuals with Chronic Illness" The CSE seminar. Michigan State University College of Engineering. Nov, 1. 2013.
21. "Social Media for Health" The DUB seminar. University of Washington, Seattle. Feb, 13. 2013. <http://vimeo.com/60021587>
22. "Usability Testing and Research Design." A lecture for a research methods course at the University of Washington Information School. Seattle, Washington. October 9. 2012.
23. "Weaving Clinical expertise into Online Peer-Patient Conversations." Open-Mic session. NLM Informatics Training Conference 2012. June 26, 2012. Madison, WI.
24. "Introduction to Human-Computer Interaction." Universidad Peruana Cayetano Heredia School of Science. May 21, 2012. Peru. Audience: Physicians.
25. "Weaving Clinical Expertise and Patient Expertise in Online Communities." Korea Advanced Institute of Science and Technology (KAIST). Department of Industrial Design. Lunch Talk. December 28, 2011. Daejeon, South Korea.
26. "Supporting Collaborative Help for Individualized use." School of Information, University of Michigan. FIRST. April 8, 2011.
27. "Collaborative Help for Individualized Problems: Learning from Diabetes Patient Support Groups." Duke University School of Nursing. March 21, 2011.
28. "Collaborative Help for Individualized Use: Learning from the MythTV User Community and Diabetes Patient Support Groups." University of North Carolina School of Information and Library Science. February 17, 2011.

**Jina Huh-Yoo, MHCI, PhD**  
331 N. Pleasant Ave  
Ridgewood, NJ 07450  
T 734 645 3664  
[jinahuh@msu.edu](mailto:jinahuh@msu.edu)

29. "Collaborative Help for Individualized Use: Learning from the MythTV User Community and Diabetes Patient Support Groups." University of Central Florida School of Visual Arts and Design. January 21, 2011.
30. "Supporting Collaborative Help for Individualized Use." Berkeley Institute of Design, University of California, Berkeley. November 16, 2010.
31. "Finding the Lost Treasure: Understanding Reuse of Used Computing Devices." School of Information, University of Michigan. FIRST. January 15, 2010.
32. "Personal Information Management in Adults with AD/HD." NSF PIM workshop as part of ASIST 2009. Vancouver, BC
33. "A Study of HP200LX Users." HCI Consortium. Colorado. Jan 30 ~ Feb 3.

### **Press**

1. Can We Talk? Some Advice on Negotiating Online Health Chat Rooms. June 30, 2017. UC San Diego Health Newsroom.
2. Social Services Innovations: Online Patient Communities. Social Work Today. Vol. 16 No. 3 P.6: <http://www.socialworktoday.com/archive/052416p6.shtml>
3. Social media unites families fighting cancer together. San Diego Union Tribune. March 8, 2015.
4. Triple Play: Three MSU Colleges Join Forces to Push Limits of Research. MSU Today. Nov. 25, 2014.
5. "HCI and Design." Computer Arts Magazine. Future Media publishing. Seoul, Korea (wrote a monthly magazine column. April, 2006 ~ November, 2006)
6. Interview with Computer Arts Magazine. Future Media publishing. Seoul, Korea. April, 2006.

### **Book Reviews**

1. Wang, X. and Schnabel, M. (eds.). Mixed reality in architecture, design, and construction (1st edition). Springer Publishing Company, Incorporated, (2008). ACM Computing Reviews (Reviews.com) April 17 2009. Review #: CR136701

### **Professional Experience**

#### **Consultant, Novo Vivo, Inc (08/2018~)**

Novo Vivo is a start-up company providing services on biomedical data aggregation, collection and analysis using innovative privacy and security technology. My role in this company is to guide user experience designers to develop user-friendly interfaces of the technology.

**Jina Huh-Yoo, MHCI, PhD**  
331 N. Pleasant Ave  
Ridgewood, NJ 07450  
T 734 645 3664  
[jinahuh@msu.edu](mailto:jinahuh@msu.edu)

**Assistant Professor, Michigan State University (04/2018~)**

Department of Media and Information, College of Communication Arts and Sciences

**Assistant Adjunct Professor, University of California San Diego (11/2015~4/2018)**

Division of Biomedical Informatics, Department of Medicine

**Adjunct Professor, Michigan State University (01/2016~4/2016)**

Department of Media and Information, College of Communication Arts and Sciences

**Assistant Professor, Michigan State University (08/2013~9/2015)**

Department of Media and Information, College of Communication Arts and Sciences

**Adjunct Assistant Professor, Michigan State University (08/2013~9/2015)**

College of Nursing, Michigan State University

**Adjunct Assistant Professor, Michigan State University (01/2014~9/2015)**

College of Engineering, Michigan State University

**National Library of Medicine Postdoctoral Fellow, University of Washington, Seattle (08/2011~07/2013)**

Division of Biomedical and Health Informatics, School of Medicine

**Graduate Research Assistant, University of Michigan (01/2010 – 07/2011)**

Worked for Mark W. Newman and Mark S. Ackerman on an NSF funded project (#0905460). Supporting social sharing of expertise in configuration.

**Graduate Research Assistant, University of Michigan (01/2009~07/2010)**

Worked for Martha Pollack on an NSF funded project (#0705103). Designing interface for preference based scheduling system at the Medical Rehabilitation center at the University of Michigan Hospital.

**Research Intern, IBM Watson, Hawthorne, NY (10/2007~12/2007)**

Researched the role of corporate internal blog with Wendy Kellogg, Thomas Erickson and Lauretta Jones.

**Graduate Research Assistant, University of Michigan (09/2004~08/2005)**

Worked for Barbara Mirel on a USDA funded project. Researched policy makers' decision-making process to design better policy analysis system.



**Free-lance web designer (07/1999-11/2002)**

- Redesigned the website for Information Standardization Valley at the National IT Industry Promotion Agency (Korea) (11/2002)
- Designed a website for a music academy: Musecall.com (Korea) (1999)

**Teaching Experience**

**Course: MI 845 Usability and Accessibility (Spring 2019)**

**Department of Media and Information, Michigan State University**

The objective of this course is to collectively share strategies in writing papers, grant proposals, and orally present effectively.

**Course: Communicating Biomedical Informatics (Winter 2018)**

**Department of Medicine, UC San Diego**

The objective of this course is to collectively share strategies in writing papers, grant proposals, and orally present effectively.

**Course: MED 264 Principles of Biomedical Informatics (Fall 2017)**

**Department of Medicine, UC San Diego**

Gave a guest lecture on “Working with Latinos population in mobile health research”

**Course: MED 277 Introduction to Natural Language Processing (Fall 2017)**

**Department of Medicine, UC San Diego**

Gave a guest lecture on “Facilitating peer-patient network through natural language processing”

**Course: MED 264 Principles of Biomedical Informatics (Fall 2016)**

**Department of Medicine, UC San Diego**

Gave a guest lecture on “Social Media for Biomedical Informatics Research”

**Course: MED 262 Current Trends in Biomedical Informatics (Fall 2015)**

**Department of Medicine, UC San Diego**

Gave a guest lecture on “Visual Media for Patient-Centered Systems”

**Course: MED 264 Principles of Biomedical Informatics (Fall 2015)**

**Department of Medicine, UC San Diego**

Gave a guest lecture on “Social Media for Biomedical Informatics Research”

Jina Huh-Yoo, MHCI, PhD  
331 N. Pleasant Ave  
Ridgewood, NJ 07450  
T 734 645 3664  
[jinahuh@msu.edu](mailto:jinahuh@msu.edu)

**Course: MED 277 Introduction to Biomedical Natural Language Processing (Spring 2015)**

**Department of Medicine, UC San Diego**

Gave a guest lecture on NLP problems arise in health-related social media discussions among patients and caregivers. The lecture consisted of 2 classes, where each class was 3 hours long. In the first class, I introduced my current research with online health communities, looking at classifying patient questions. For the second class, the students did group presentations on their ideas for how NLP can be used to help with online health information seeking activities.

**Course: CAS 850 Health Informatics (online—Spring 2014-2016)  
College of Communication Arts and Sciences, Michigan State University**

**Course: TC 840 Interaction Design (Spring 2014)  
Telecommunication, Information Studies, and Media, Michigan State University**

**Course: MEBI 591 Designing Online Technologies for Patient Self-Management (Fall 2012)  
Class Instructor, Biomedical Informatics and Medical Education  
University of Washington**

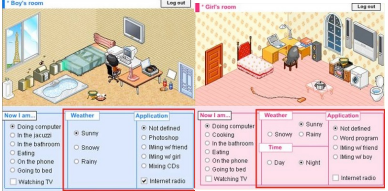
This course explores designing online technologies for supporting patient self-management. The goals are to understand: (1) health information needs that emerge during patient self-management, (2) the ways in which current online technologies help (or not help) such information needs to be fulfilled, and (3) what future online technologies may be able to help provide safe and high quality information support for patients.

**Course: SI 501 The Use of Information (Fall 2007-2008)  
Graduate Student Instructor, School of Information, University of Michigan**  
The class teaches students about contextual inquiry such as interviewing and observations techniques for project management and consulting organizational work flow. I led discussion sections for both classes in which class materials were reviewed through various forms of materials such as exercises, small group discussions, and Q&A discussions.

**Course: SI 503 Search and Retrieval (Winter 2006-2007)  
Graduate Student Instructor, School of Information, University of Michigan**  
The class covers basic understandings towards information search and retrieval behavior, emergent information phenomena on the Web, navigational search, and social and organizational memory. I led discussion sections for both classes



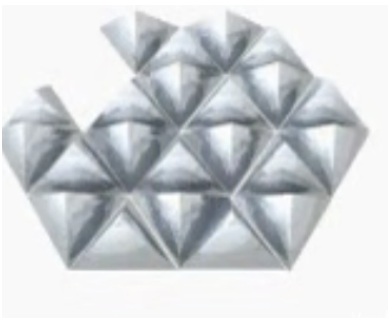
“Sun” tangible UI exercises (2004)



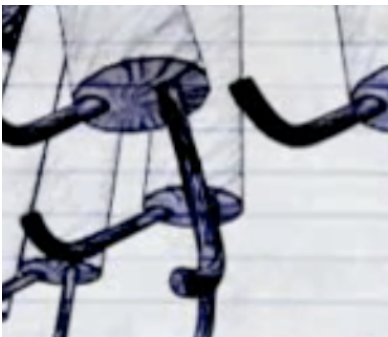
Awareness system for couples (2004)



Awareness system for international students (2004)



“Three” (2003)



“Will you let them win?” (2002)

Jina Huh-Yoo, MHCI, PhD  
331 N. Pleasant Ave  
Ridgewood, NJ 07450  
T 734 645 3664  
[jinahuh@msu.edu](mailto:jinahuh@msu.edu)

in which class materials were reviewed through various forms of materials such as exercises, small group discussions, and Q&A discussions.

### High school teacher, Korea National Animation High School (03/2003~07/2003)

Designed and taught Graduate Design Studio course for the senior class.

### Design Projects

#### Pangmangi, University of Michigan (2005 ~ 2006)

Designed a prototype to support awareness in a public space through animated/ interactive simulations and ran a focus group to understand how people perceive unfamiliar computing devices in public spaces.

#### Design and HCI, Carnegie Mellon University (2004)

Worked for Jodi Forlizzi, Shelly Evenson, and John Zimmerman to investigate the relationships between Design and HCI. Interviewed HCI faculty and their PhD students at HCII, CMU.

#### Group Calendar for a rehabilitation clinic, University of Michigan (2010)

Funded by NSF #IIS 0705103 . Worked with the rehabilitation center at the U of M hospital and Computer Science department to design preference-based automated scheduling system

#### Vehicle JukeBox, Carnegie Mellon University (2004)

For masters graduation project advised by Robert Kraut at CMU, as part of a group project we designed car stereo interface for a major U.S. automobile manufacturer. Part of our design suggestions have been incorporated to a car model on the market in 2005.

#### Educational tool in tablet PC, Carnegie Mellon University (2004)

Worked for Ananda Gunawardena to design an educational application using tablet PC that can help students understand data structures in programming.

#### E-Book (Mark up tool) Project, Carnegie Mellon University (2004)

Evaluated usability and redesigned the Mark Up Tool Software used on ebooks.

#### Building Virtual Worlds (BVW), Carnegie Mellon University (2003)

Advised by Randy Pausch. Built desktop and immersive (Head Mount Display) interactive virtual worlds with a group of interdisciplinary people. My role was a painter (texture designer)

#### ‘Three’ (2003)

Graduation project. 3D Graphic animation. Exhibited at ‘The Dropship’ Digital Film Show, Seoul, Korea 2003.

**'Will you let them win?' (2002)**

3D Graphic animation. Exhibited at 'Mok Gum Toe Gallery,' Designer's Party  
2004. Seoul, Korea

**Professional Services**

2018-2022 ACM Computer-Supported Collaborative Work Steering Committee  
2018 NSF Panelist (Panel session name removed per NSF policy)  
2017~2019 UC San Diego Associated Health Professions Education Committee  
(AHPEC)  
2017 NSF Panelist (Panel session name removed per NSF policy)  
2016 Search Committee for the Director of Biomedical Informatics, UCSD  
2014 Department of Media and Information Undergraduate Curriculum  
Revision Task Force  
2014 Reviewer for the MSU summer fellowship 2014  
2014~2015 The iCARE Lab lead manager  
2013~2015 MSU Trifecta Intellectual Leader Group Member  
2013~2015 Undergraduate representative of the College Advisory Council of  
the Department of Media and Information

**Conference Committee Experience**

2019 The Web Conference Program Committee  
2019 ACM Human Factors in Computing Systems Area Chair for Design  
2018 AMIA 2018 Annual Symposium Scientific Program Committee  
2017 IEEE Pervasive Health 2017 Program Committee  
2017 Workshop for Interactive Systems Healthcare 2017 Co-Chair  
2017 ACM Computer-Supported Collaborative Work Conference  
program committee  
2016 ACM Designing Interactive Systems Program Committee  
2016 AMIA 2016 Annual Symposium Scientific Program Committee  
2016 Pervasive Health Posters and Demos Co-Chair  
2015 ACM Human Factors in Computing Systems Area Chair for Special  
Applications-Health  
2015 ACM Computer-Supported Collaborative Work Conference  
program committee  
2014 ACM Human Factors in Computing Systems Area Chair for Special  
Applications-Health  
2013 ACM Human Factors in Computing Systems Area Chair for Special  
Applications-Health  
2013 ACM Human Factors in Computing Systems Work-in-progress Program  
Committee  
2013 ACM Computer-Supported Collaborative Work Conference program  
committee  
2012 ACM Human Factors in Computing Systems Work-In-Progress program  
committee

**Review Experience**

BioMed Central, Pervasive Health, ACM CHI, NordiCHI, INTERACT, ACM  
CSCW, ACM DIS, ACM GROUP, Computing Reviews, AMIA, DRS

**Jina Huh-Yoo, MHCI, PhD**

331 N. Pleasant Ave

Ridgewood, NJ 07450

T 734 645 3664

[jinahuh@msu.edu](mailto:jinahuh@msu.edu)

2014: ACM DIS, ACM CSCW, DRS, Pervasive Health, Interacting with Computers, AMIA, Journal of Medical Internet Research, JCSCW  
2015: Journal of Medical Internet Research, ACM CSCW  
2016: JAMIA, JMIR, IJHCS  
2017: NLM Conference; IEEE Pervasive Health; Book chapter for eHealth; IJHCS; ACM CHI; JIMR; JMIR; Computers in human behavior  
2018: AMIA, Media and Society, ACM CHI, JBI

### **Membership**

ACM, AMIA

### **Students**

#### **Thesis committee**

Drashko Nakikj (External Committee member, Columbia University, Biomedical Informatics, January 2019~)

Jing Zhang (Committee Chair, UCSD Biomedical Informatics, Summer 2015~Winter 2018) *Senior user experience analyst at OpenClinica, Boston, MA*

Shaheen Kanthawala (MSU Media and Information PhD Committee, Spring 2015~)

#### *Alumni*

Lisa Kopf (MSU Communicative Science & Disorder PhD Committee, Fall 2013 ~ Summer 2016) *Postdoc, University of Iowa*

Yumi Jung (MSU Media and Information PhD Committee, Fall 2013 ~Summer 2015)

Albert Park (University of Washington Biomedical and Health Informatics PhD, Spring 2015)

Tianyu Hu (MSU MIS Masters Committee Chair, 2015) *UX Designer & Researcher at Age of Learning, Inc. LABS*

Shengji Zhou (MSU MIS Masters Committee, 2015) *User Experience Designer*

### **Research Assistants**

Ji Youn Shin (MSU Media and Information, Fall 2018~)

#### *Alumni*

Alexandria Trocke (MSU College of Nursing PhD, Spring 2015)

Shaheen Kanthawala (MSU Media and Information, Spring 2015)

Couri VanDam (MSU CSE PhD, Spring 2015)

Mengyan Ma (MSU MIS, Fall 2014~Summer 2015)

Kendra Pennings (MSU Nursing, Trifecta RA, Fall 2014)

Daniel Totzkay (MSU Communication, Summer 2014)

Katie Hoban (MSU Undergraduate, Summer 2014)

Young Jun Sah (MSU Telecommunication, Fall 2013)

**Research advisor**

***Alumni***

*Postdoc*

Lizbeth Escobedo (NSF Postdoctoral Fellow, Fall 2016 ~ Fall 2017)  
Rebecca Marmor (UCSD Biomedical informatics NLM Postdoctoral Fellow, SOM Surgical Resident, Fall 2015 ~ Summer 2017) SOM Surgical Resident  
Giovanni Troiano (NIH Biocaddie, Jan 2017 ~ Summer 2017)  
Tsung-Ting Kuo (UCSD Biomedical informatics Postdoctoral Fellow, 2016 ~ Summer, 2017)

*Graduate*

Yuanyuan Feng (UMBC Information science PhD student, Spring 2017 ~ Fall 2017)  
Elizabeth S Epstein (UCSD Medical School student, Summer 2016 ~ January 2017) UCSD Medical school student  
Meera Reghunathan (UCSD Medical School student, Summer 2016 ~ December 2016) UCSD Medical school student  
Ella Meng (University of Michigan Masters student, UCSD iDASH summer intern, Summer 2016)  
Mitchell Boldin (University of Michigan Masters student, UCSD iDASH summer intern, Summer 2016)  
Lisa Kopf (MSU Communicative Science & Disorder, Fall 2013 ~ July 2016)  
*Assistant Professor, Iowa State University*  
Tianyu Hu (MSU MIS student, Spring 2014~Summer 2015) *UX Designer & Researcher at Age of Learning, Inc. LABS*  
Ali Hussain (MSU Journalism, Feb 2014 ~ Summer 2015)  
Jasmine Roberts (UCSD Computer Science, Fall 2015 ~ Spring 2016) *PhD student, MIT Media Lab*  
*Shupej Yuan (MSU Advertising, Fall 2013 ~ Summer 2015) Assistant Professor, Northern Illinois University*

*Undergraduate*

Zhen Liang (*Peking University, Undergraduate, Summer 2017*)  
Sid Ambulkar (*UCSD Bioinformatics, Premed, Fall 2016 ~ Winter 2018*)  
Justus Grant (MSU Engineering undergraduate, ENSURE program, Summer 2014)  
Brian Kim (UCSD Computer Science, Fall 2016 ~ Spring 2017)  
Raina Ahuja (UCSD Computer Science, Fall 2016 ~ Spring 2017)  
Enrique Zavala (UCSD Cognitive Science, Fall 2016 ~ Spring 2017)  
Aleksandre Bogotov (UCSD Computer Science / bioinformatics, Undergrad, Summer 2017)

**Jina Huh-Yoo, MHCI, PhD**  
331 N. Pleasant Ave  
Ridgewood, NJ 07450  
T 734 645 3664  
[jinahuh@msu.edu](mailto:jinahuh@msu.edu)

Stephen Trac (UCSD Cognitive Science, Undergrad, Summer 2017)  
Elmer Barrera (UCSD Cognitive Science, Fall 2016 ~ Spring 2017)  
Connie Guan (UCSD Cognitive Science, Fall 2016 ~ Spring 2017)

*High School*

Luz Mascorro (Preuss High School, Summer 2017)